

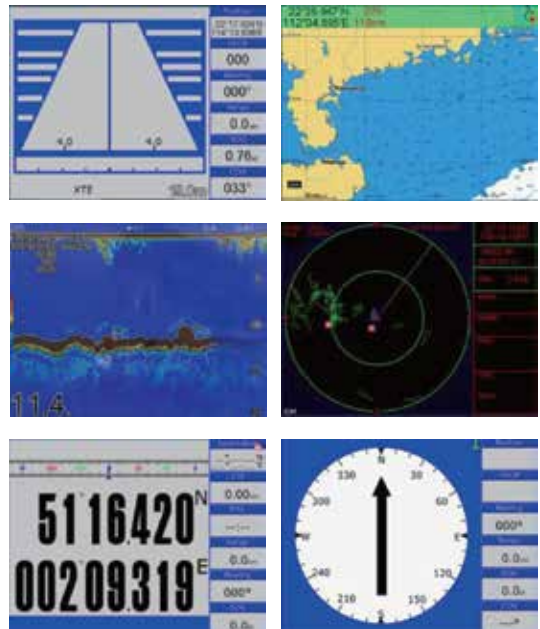


PY-GP7FP

7" GPS Chart Plotter with Fish Finder

Features

- 7-inch High Resolution LCD, 800×600 pixels
- Comes with GPS Antenna (10m)
- Easy to operate and sunlight viewable
- Compatible with dual mapping system, C-MAP and K-Chart
- Digital HD Fish finder Technology
- 50/200 KHz Dual Frequency Thru-Hull Transducer
- Speed, Depth, Position, Fish and Bottom Alarms
- IPX5 waterproof panel
- Rejects unwanted signals by comparing last and presents echoes in strength
- Connection to AIS available (Optional, AIS not included)
- Temperature Function/Alarm available (Optional, Sensor not included)



Scope of Supply

Descriptions	Part No	Quantity	Descriptions	Part No	Quantity
Display unit	PY-GPD7	1	Adapter (SMA to BNC)	SMA to BNC	1
GPS Antenna (10m)	PY-GA07	1	Fuse	F2AL250v	2
Transducer (8m)	Plastic PT50/200, OPT: Bronze BT50/200	1	Self-tapping screws	1.5cm * 0.5cm	3
Equipment Base	NIL	1	Phillips Head Screw	1.5cm * 0.2cm	4
Equipment Cover	NIL	1	Power Cable	8 pin	1
Sealing Strip	21.91cm * 13.6cm	1	Quick Manual	NIL	1

Plotter Specifications	
1. WAYPOINTS/ICONS	12,000 user waypoints with name, symbol, 3 system waypoints: MOB,Start,cursor 10 proximity waypoints
2. ROUTES	30 routes waypoint up to 170 points each, plus MOB and Track Navigation or Goto Track modes
3. TRACKS	8,000 point automatic track log; 10 saved track (up to 8000 track points each)let you retrace your path in both directions
4. ALARMS	XTE, Anchor drag, arrival, speed, voltage, proximity waypoint and time.
5. PALLETE	Normal Daylight exposed to sunlight Night in dark environment NOAA paperchart colors
6. TIDES	Build in worldwide tide data
7. POSITION FORMAT	Lat/Lon
8. BASEMAP	Built-in K-Chart Specify while ordering
9. EXTERNAL MAP	SD Cards slot for C-Map MAX and Navionics+
10. USER DATA STORAGE	Internal backup of user settings, or external SD-card
11. PLOT INTERVAL	1s to 99h or 0.01 nm to 9.99nm
12. PLOTTING SCALES	0.01nm to 1,000nm
13. NAV DATA	Inputs: \$-DBT, \$-DPT, \$-GGA, \$-GLL,\$-GSA, \$-GSV, \$-HDC,\$-HDM,\$-HDT,\$-MTW, \$-RMB, \$-RMC, \$-VTG, \$-ZDA, \$-VWR,\$-VWT,\$-MWD, \$-VPW Outputs: \$-AAM, \$-APB, \$-BOD,\$-BWC,\$-GGA, \$-GLL, \$-RMB,\$-RMC,\$-VTG, \$-XTE, \$-ZDA, \$-DBT \$-DPT, \$-WPL, \$-ZDL, \$-ZTG Outputs for autopilot: \$-AAM, \$-APB, \$-BOD,\$-VTG, \$-DBT, \$-DPT
15. PERSPECTIVE VIEW	On/off
16. CELESTIAL	Sunrise/Sunset Moonrise/Moonset
Display Size	
1. SIZE	243mm(H) X 155mm(W) X 82mm(D)
2. WEIGHT	0.6kg
3. DISPLAY	7" Color TFT dayview LCD, 800×600px
4. WATERPROOFING	Display unit: IP67 / Antenna unit: IP66
5. TEMPERATURE RANGE	Display unit: -15°C to +55°C Antenna unit: -25°C to +70°C

Power Supply										
10.5 to 30VDC, current drain 1.0A at 12V										
GPS Receiver Specification										
1. RECEIVER	50 parallel channel GPS receiver continuously Tracks and uses up to 50 satellites to compute and update your position									
2. ACQUISITION TIMES	Cold start: 60 seconds average Hot start: 45 second average									
3. UPDATE RATE	1/second or 10/second (selectable) , continuous									
4. ACCURACY	Position: 2.5 meters(95%) without S/A Velocity: 0.1 Meter/sec without S/A Time: ±100ns synchronized to GPS time									
5. DYNAMICS	Altitude: 50,000m Max Velocity: 500 m/s Acceleration: 4g Max									
6. DATUM	WGS 84 & Others									
7. INTERFACES	NMEA 0183 input and output,RS232 output									
Echo Sounder / Fish Finder Specification										
1. ECHO COLOR	8 colors (including background color) according to echo intensity. The background color is selectable from blue, light blue, white and black.									
2. BASIC RANGE	Meters 5/10/20/40/80/150/200/300/600/1000 Feet 15/30/60/120/200/400/600/1000/2000/3000 (*The basic ranges can be changed on the system menu.)									
3. RANGE SHIFT	Up to 80 meters (200 feet)									
4. ZOOM RANGE	Times 2,3,4 and 6 ranges									
5. BOTTOM LOCK EXPANSION RANGE	5/10 meters,10/20 feet, 2/5 fathoms									
6. AUTO MODE	Automatic adjustment of range and gain									
7. DISPLAY MODE	Dual (200KHz and 50KHz 1/2 display on each) and A-scope Display									
8. ZOOM DISPLAY	Marker Zoom, Bottom Zoom and Bottom-lock Expansion									
9. DISPLAY ADVANCE SPEED	Lines/TX:Freeze,1/8,1/4,1/2,1/1,2/1									
10. TX FREQUENCY	50 and 200kHz (alternately transmitted)									
11. Power Output	600W									
12. Interference Rejecter	Rejects unwanted signals by comparing last and present echoes in strength.									
13. Alarm	Fish and Bottom alarms, Temperature alarm (sensor required)									
14. PULSE-LENGTH/TX RATE										
Display End Depth(m)	5	10	20	40	80	150	200	300	600	1000
Pulse-Length(ms)200k	0.12	0.22	0.32	0.52	0.92	1.02	1.02	1.02	1.02	1.02
Pulse-Length(ms)50k	0.17	0.27	0.37	0.57	0.97	1.07	1.07	1.07	1.07	1.07
TX Rate(Pulse/min)	2400	1500	857	444	231	125	95	63	38	30

Distributor:



Singapore Head Office

PIO-SHIP DESIGN & SYSTEM INTEGRATE PTE LTD
 Address:
 5 Soon Lee Street #03-34 Pioneer Point Singapore 627607
 Tel: +65 68982885
 Email: sales@pio-ship.com

Philippines Office

PIO-SHIP SYSTEM INC.
 Address:
 Unit 503 Adriatico Executive Centre 1920 M. Adriatico St.,
 Malate, 1004 Manila, Philippines
 Tel: +63 02 8742 4560
 Email: sales_ph@pio-ship.com