



PIOTRONICS PY-G128 QUICK MANUAL

THANK YOU FOR CHOOSING PIOTRONICS GPS NAVIGATOR

Disclaimer:

In support of the company's policy of continuous product improvement, the information contained in this manual is subject to change without any prior notice.

Scope of Supply

Scope of Supply

- a. Display Unit
- b. GA-07 External GPS antenna with 10 meters cable
- c. Mounting brackets (L147.2*W33*H78cm)
- d. PY-G128 Quick Manual
- e. Standard accessories pack:
 - 1 power/data cable with 8pin
 - 2 spare fuses (0.5A 6×30)
 - 4 mounting screws (1.5*0.5cm)

To download full manual and see latest updates, please go to our website: www.piotronics.com

SAFETY INSTRUCTIONS

Safety Instructions for the Operator

WARNING

Do not open the equipment.

Only PIOTRONICS, its service agent or qualified personnel can open the equipment.

Do not disassemble or modify the equipment.

Fire, electrical shock or serious injury can result.

Immediately turn off the power at the switchboard if the equipment is emitting smoke or fire.

Continued use of the equipment can cause fire or electrical shock. Contact a PIOTRONICS agent for service.

Use proper fuse.

Use of a wrong fuse can damage the equipment or cause fire.

Be sure the power supply is compatible with the equipment.

Incorrect power supply may cause the equipment to overheat and a hazard.

The useable temperature range -15°C to 55°C for the display unit.

Use of the equipment out of those ranges may damage the equipment.

Use a dry, soft and lint-free cloth to wipe your display screen.

Incorrect material to clean may cause scratch or damage on the screen.

To download full manual and see latest updates, please go to our website: www.piotronics.com

Safety Instructions for the Installer

WARNING

Do not open the cover unless totally familiar with electrical circuits and service manual.

Improper handling can result in electrical shock.

Turn off the power at the switchboard before beginning the installation.

Fire or electrical shock can result if the power is left on.

Be sure that the power supply is compatible with the voltage rating of the equipment.

Connection of an incorrect power supply can cause fire or equipment damage.

Use the proper fuse.

Use of a wrong fuse can damage the equipment or cause fire.

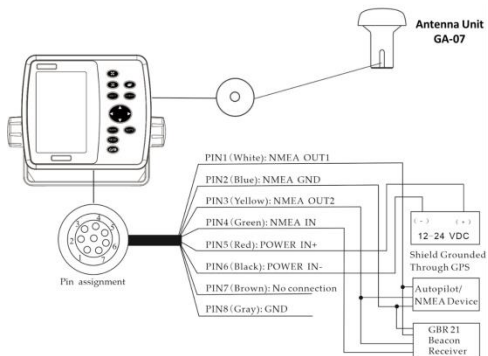
NOTICE

Observe the following compass safe distances to prevent interference to a magnetic compass:

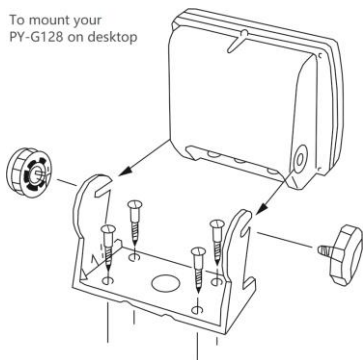
	Standard compass	Steering compass
Display unit	0.80 m	0.55 m

To download full manual and see latest updates, please go to our website: www.piotronics.com

INTERCONNECTIONS

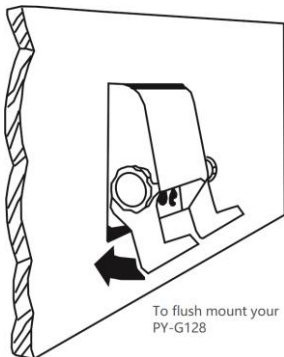


To mount your
PY-G128 on desktop

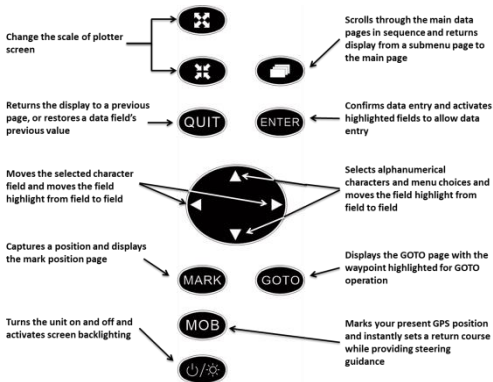


To download full manual and see latest updates, please go to our website: www.piotronics.com

INTERCONNECTIONS



Keypad instruction

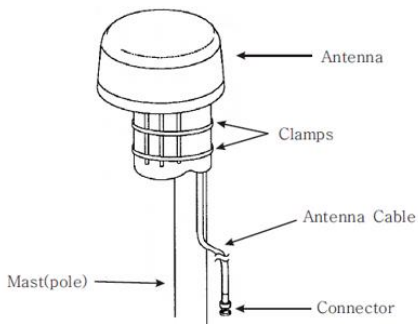


To download full manual and see latest updates, please go to our website: www.piotronics.com

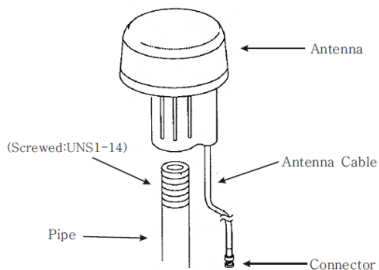
To Install Antenna



INSTALLATION WITH CLAMPS




INSTALLATION WITH A PIPE (CUSTOMER'S CARE)




To download full manual and see latest updates, please go to our website: www.piotronics.com

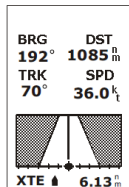
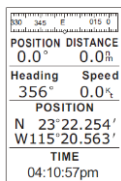
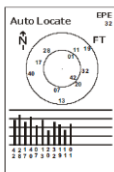
Get start with your PIOTRONICS

Turning ON and OFF Power

Turning ON the power by press  key, the unit beeps and then starts up with the welcome screen. Your equipment may take about 2 minutes to fix its position when turned on for the first time.

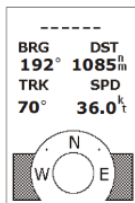
Turning off the power by press and hold  key for about 3 seconds until the screen goes blank and turned off.

Get to know your pages



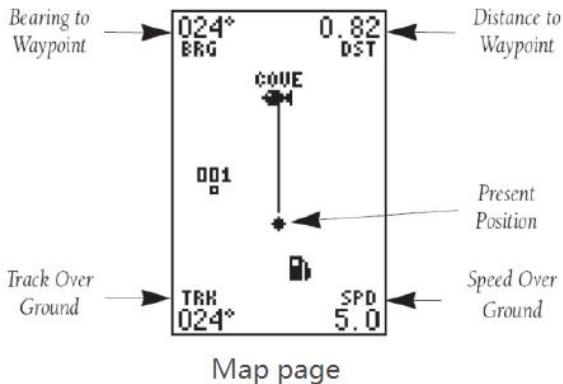
MENU
NEAREST WPTS
PROXIMITY WPTS
WAYPOINT LIST
WAYPOINT ROUTES
SYSTEM NAVIGATION
ALARMS FILTER INTERFACE

Menu page





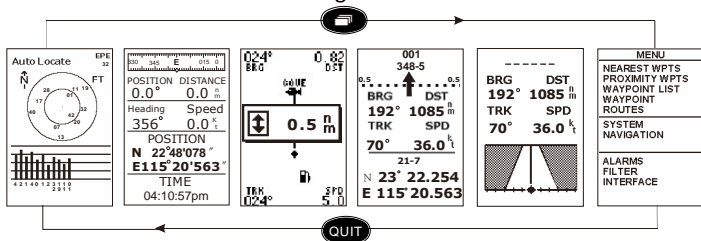
To download full manual and see latest updates, please go to our website: www.piotronics.com

Get start with your PIOTRONICS



Change of display modes

There are 6 available display modes in PY-G128. You can press  to change the display modes from left to right direction as shown below or you can press  to change the display modes in reverse direction from right to left.



To download full manual and see latest updates, please go to our website: www.piotronics.com

Get start with your PIOTRONICS

Specifications	
PHYSICAL	Case: Waterproof* Size: 134mm × 152mm ×68mm Weight: Less than 1 lb. (454g) Temperature Range: 5° to 158° F (-15° to 70C)
PERFORMANCE	
Receiver:	50 Parallel-Channel
Acquisition Time:	Approx. 40 seconds (warm) Approx. 60 seconds (cold) Approx. 2 minutes (Auto Locate)
Update Rate:	1/second, continuous
Position Accuracy:	1-5 meters (3-17ft.) with DGPS corrections** 15meters (49ft.) RMS***
Velocity Accuracy:	0.1 knot R MS steady state
Dynamics:	Performs specification to 6g
Waterproofing	Display Unit IPX6
POWER	Input: 12-24@v DC Usage: 2 watts

To download full manual and see latest updates, please go to our website: www.piotronics.com

Message

The PY-G128 uses a flashing on-screen message indicator to alert you some important information. Whenever the message indicator appears, press PAGE to view the message page. There are two types of messages: temporary alerts and condition alerts. Temporary alerts are cleared from the message page after viewing, while condition alerts remain until the condition has been resolved. Pay careful attention to all messages for your safety.

Message example:

- **Active WPT Can't be Deleted** You have attempted to change the active to or active from waypoint. Clear the active route or GOTO before making your changes.
- **Accuracy has been Degraded, Already Exists, Approaching, etc. To find out more message information from the manual, please go to our website.**



Electronic aids are not substitute for basic navigation principles and common sense. The navigator must check all the supporting aids available to determine position, and should not rely on the one navigation device for the navigation of the ship.

To download full manual and see latest updates, please go to our website: www.piotronics.com

