

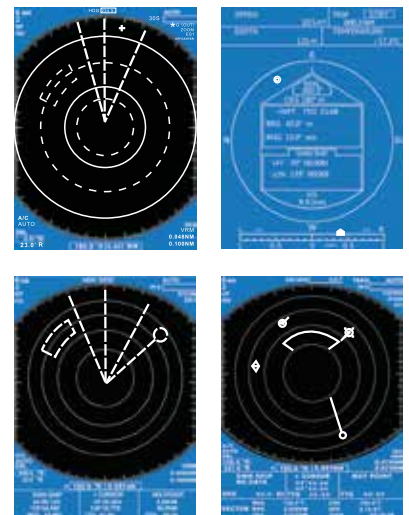


PY-R1012/R1006

Marine Radar with Open-Array or Radome Antenna Radiator.

Features

- Good quality and reliability in a compact, functional and affordable radar radiator.
- Durable brushless antenna motor.
- Target Tracking function (TT) up to 40 targets.
- AIS target and radar target overlay. (external AIS input is needed).
- Digital radar target technology.
- On-screen alphanumeric readout of all operational information.
- Standard features include: EBL(Electronic Bearing Line) , VRM(Variable Range Marker), Guard Alarm, Display Off Center, and Echo Trail.
- Watchman feature periodically transmits the radar to check for radar targets which maybe entering the alarm zone.
- Ship's position in latitude and longitude and range and bearing to waypoint and ship's speed/heading/course can be shown in the bottom of the screen. (Requires a navigation aid which can output such data in IEC 61162 format.)
- Zoom feature provided.



Scope of Supply

Descriptions	Part No	Quantity	Descriptions	Part No	Quantity
Display unit	PY-RD1000	1	Display Screen Protector	NIL	1
Antenna Radiator	PY-R0006 or R0012	1	Quick Manual	NIL	1
Display Bracket Set	NIL	1	Standard Spare Parts Set	NIL	1 sets

Display Unit	
1. PY-RD1000 Display	10-inch LED backlight, 32-bit TFT Color LCD Display
2. Range scale(nm)	0.125, 0.25, 0.5, 0.75, 1, 1.5,2, 3, 4, 6, 8, 12, 16, 24, 36, 48**, 64**, 72** (* for PY-R1012 only)
	No. of Rings : 0.625, 0.125, 0.125, 0.25, 0.25, 0.5, 0.5, 1, 1, 2, 2, 3, 4, 6, 12
3. Echo Trail	Interval: 15s, 30s, 1min, 3min, 6min, 15min, 30min or continuous
4. Interface (NEMA 0183 format) --: any talker (menu selection)	input: APB, BWC, BWR, DBK, DBS, DBT, DPT, GGA, GLC, GLL, GTD, HGD, HDW, HDT, MDA, MTW, RMA, RMB, RMC, TVG, VHW, XTE
5. AIS Display	Acquisition: AIS vessels or ATON Tracking: Auto Display: Vessel Name, MMSI, call sign, Range/Bearing, L/L, Speed/ Course, ROT, CPA/TCPA (AIS data input required)
6. Target Tracking Function	Acquisition: 20 manual or 10 auto + 10 manual Tracking: Auto Display: Speed, Course, Range/ Bearing and CPA/TCPA
7. Waterproofing	IPX5
Antenna Radiator	
1. TYPE:	PY-RS0006: 55cm hybrid array PY-RS0012: 120cm hybrid array PY-RS0018: 180cm hybrid array*** (***available soon)
2. Length and Rotation speed	a. PY-R1006: Radome 60cm (PY-RS006)24RPM b. PY-R1012: Open array 120cm (PY-RS012) 24RPM
3. Wind load	Relative wind 100 knots (51.5m/s)
4. Beam width	PY-RS0006: Horizontal: 4° Vertical: 25° PY-RS0012: Horizontal: 1.9° Vertical: 22°
5. Side lobe	Within±20°off main lobe; less than-18dB Outside±20°off main lobe; less than-23dB
Power Supply	
5 VDC to 40 VDC, 60W (30W in economy mode)	

Radio Frequency Transceiver	
1. Transmitting tube	MSF1421B or MAF1421B
2. Frequency	9410MHz±30MHz (X-band)
3. Peak output power	PY-R1006: 4kW nominal PY-R1012: 6kW nominal
4. I.F:	60MHz
Bandwidth:	Tx pulse length 25MHz (0.08uS/ 0.3uS) Tx pulse length 3MHz (0.8uS)
5. Mixer and Local Oscillator	Microware Integrated Circuit (MIC)
6. Noise Figure	10dB nominal
7. Pulse length & pulse repetition rate:	0.08uS/2100Hz(0.125, 0.25, 0.5, 0.75, 1, 1.5*nm) 0.3uS/1200Hz(1.5*, 2, 3nm) 0.8uS/600Hz(3*, 4, ,6, 8, 12, 16, 24, 36, 48**, 64**nm) *Pulse length & PRR for 1.5 and 3nm range can be selected in menu **for PY-R1012 only
Other Information	
1. Temperature	-25°C to +70°C (Antenna unit) -10°C to +50°C (Display unit)
2. Humidity	Relative humidity 93% or less at +40°C
Dimension (mm)	

Distributor:

PIO-SHIP

Singapore Head Office

PIO-SHIP DESIGN & SYSTEM INTEGRATE PTE LTD

Address:
5 Soon Lee Street #03-34 Pioneer Point Singapore 627607
Tel: +65 68982885
Email: sales@pio-ship.com

Philippines Office

PIO-SHIP SYSTEM INC.

Address:
Unit 503 Adriatico Executive Centre 1920 M. Adriatico St.,
Malate, 1004 Manila, Philippines
Tel: +63 02 8742 4560
Email: sales_ph@pio-ship.com